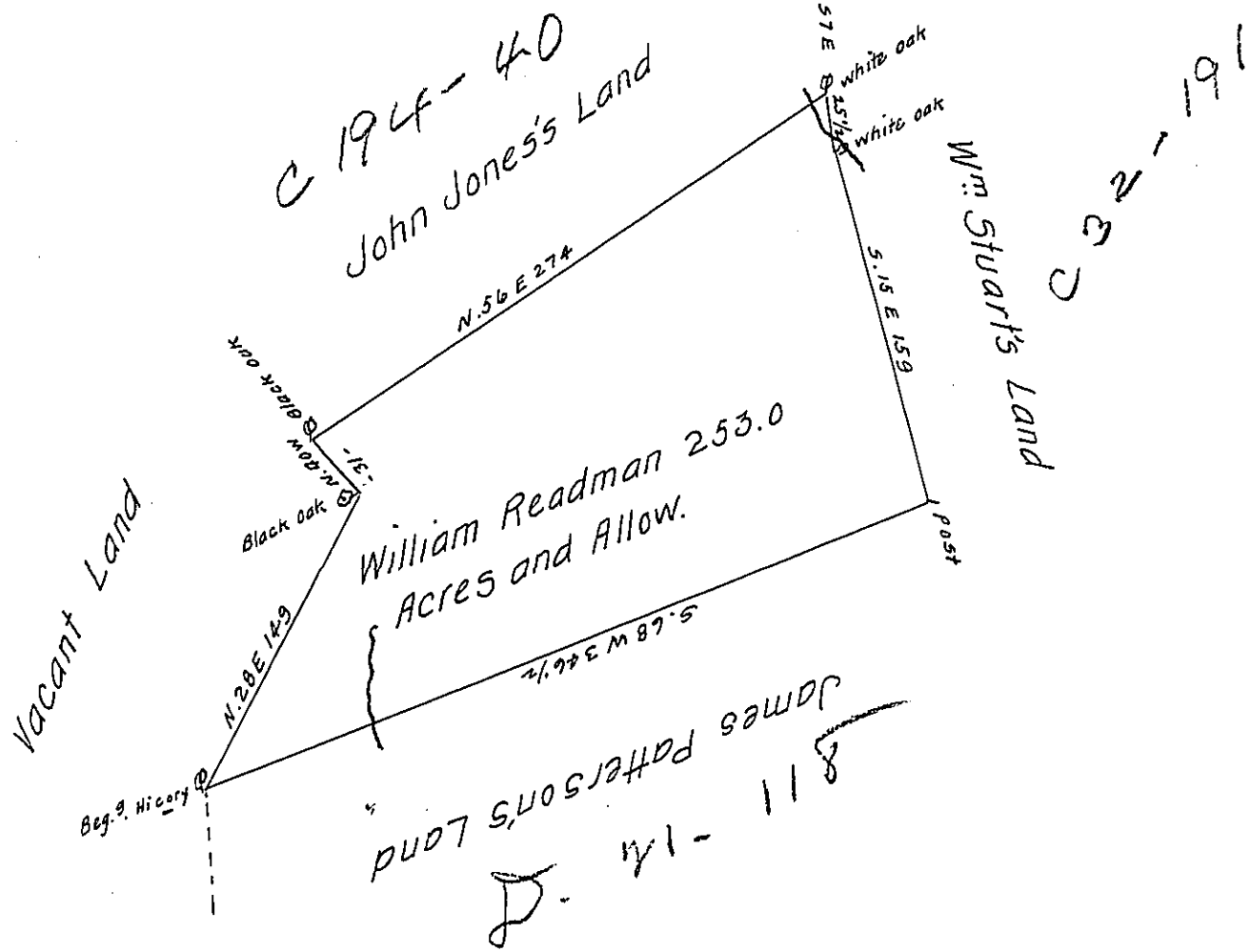


C 116-141



The Draught of a Tract of Land called ——— situate on the north side of Juniata — in the County of Cumberland containing Two Hundred Fifty Three Acres with the usual Allowance of Six Acres & Cent: for Roads. Survey'd the 12th day of August Anno. Dom. 1767. In Pursuance of an Order of Survey to William Readman Bearing Date at Philad^a the 14th day of February Anno Dom. 1767 and numbered 2797.

To John Lukens Esq^r S.G. } P. W^m Maclay U.S.
of Pennsylvania }

IN TESTIMONY that the above is a copy of the original remaining on file in the Department of Internal Affairs of Pennsylvania, made conformably to an Act of Assembly approved the 16th day of February, 1833, I have hereunto set my Hand and caused the Seal of said Department to be affixed at Harrisburg, this fourteenth day of June 1907.

Henry Howell
Secretary of Internal Affairs.